

PALO ALTO UNIVERSITY

---

UNDERGRADUATE  
TRANSFER BOOK



[paloalto.edu](http://paloalto.edu)

| *Silicon Valley, CA*





## INSIDE

|                                       |       |
|---------------------------------------|-------|
| Why PAU? .....                        | 2-3   |
| Flexible formats.....                 | 4-5   |
| BS Business Psychology.....           | 6-7   |
| BS Psychology and Social Action ..... | 8-9   |
| Which degree is for you?.....         | 10-11 |
| Student life.....                     | 12-13 |
| Affordability.....                    | 14-15 |
| Transfer made easy.....               | 16-17 |
| Facts and statistics .....            | 18-19 |
| Contact us.....                       | 20    |

# SO MANY QUESTIONS....

▶ What are my degree choices?

▶ Can I afford it?  
Can I get a scholarship or grant?

▶ What kinds of careers will I be qualified for?

▶ How can I get my bachelor's degree in the shortest possible time?

▶ Is it easy to transfer?

# ...WE'VE GOT THE ANSWERS

Palo Alto University is a private, independent university focused on psychology and the behavioral sciences. Founded in 1975 as the Pacific Graduate School of Psychology, the university has been accredited since 1989. We began offering undergraduate programs in 2006 and changed our name to Palo Alto University in 2009 to reflect the full range of our degree offerings. We have been a leader in online education since the year 2000.

Our mission is to prepare graduates to expand the body of knowledge and apply it in business, social action and clinical careers. Our commitment to *Engaging Minds, Improving Lives* extends to our students first, then to the local and global communities we serve.

From our locations in Silicon Valley, California, Palo Alto University has earned a national reputation for exceptional quality and value in social sciences education.

## **Palo Alto University is the answer for students who...**

- ▶ share our passion for the social and behavioral sciences
- ▶ desire a high quality, well respected college degree
- ▶ want a guaranteed path to graduate in two years or less
- ▶ need online options and scheduling that fits their work and family responsibilities
- ▶ seek an affordable education with the possibility of grants or scholarships

## WHY PAU?

### ***Amazing Success Rate***

- ▶ 80% finish in 1.8 years

### ***Affordable, Accredited***

- ▶ Average loan indebtedness is \$22k
- ▶ Earn income after two years

### ***Flexible, Fast***

- ▶ Online and Silicon Valley campus options

### ***Transfer Friendly***

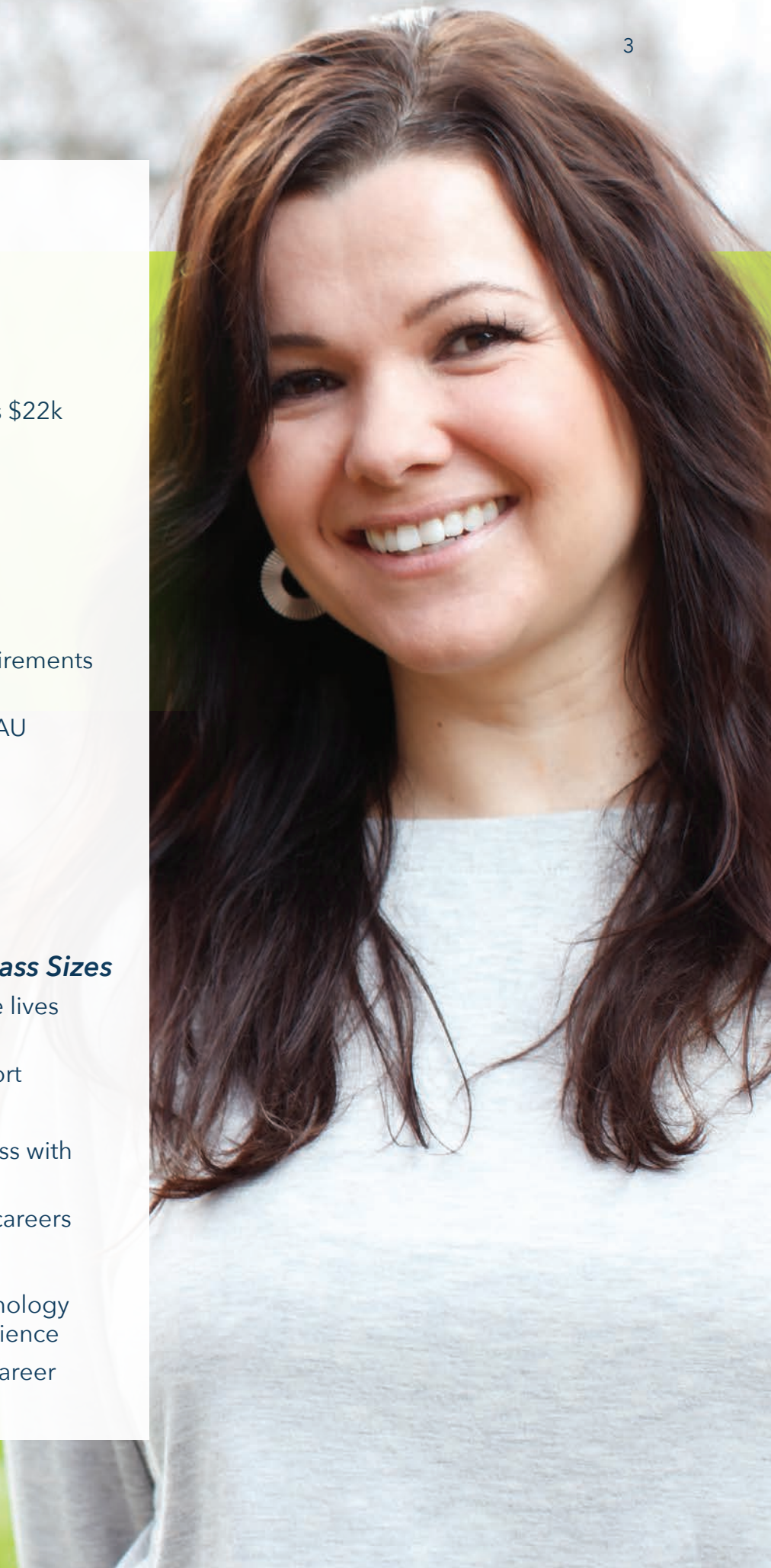
- ▶ Meet general education requirements and you're in
- ▶ Early start opportunities for PAU graduate programs

### ***Expert Legacy***

- ▶ 40 years specialization in behavioral sciences
- ▶ 16 years teaching online

### ***Relevant Programs, Small Class Sizes***

- ▶ Majors that are relevant to the lives we live today
- ▶ 15-30 students per peer cohort
- ▶ **Business Psychology**
  - Solid foundation in business with emphasis on people skills
  - Opens doors to business careers
- ▶ **Psychology and Social Action**
  - Strong foundation in psychology with emphasis on social science
  - Gateway to a counseling career



## CHOOSE THE FORMAT THAT WORKS FOR YOU

Most PAU students juggle work, family and other responsibilities. Our location and format options enable you to choose the schedule that is most convenient for you—and keep your job while finishing your degree.

### ONLINE



Both bachelor's degree programs are offered in a fully online format. Classes are on a year-round schedule, including summers. This format gives you maximum flexibility to reach your education goals while balancing work, family and other responsibilities.

### ON-CAMPUS



All classes meet weekdays, during the day, at De Anza College in Cupertino, CA, Foothill College in Los Altos, CA, or the College of San Mateo in San Mateo, CA. You take more credit hours from September to June, and you have the summer off.

### HYBRID



You take one evening class each week at De Anza College campus in Cupertino, and two classes each week online. This blend enables you to meet your professors and cohort members face-to-face while also benefiting from the time savings and flexibility of online courses.

|   | <b>ONLINE</b>  | <b>ON-CAMPUS</b>   | <b>HYBRID</b>             |
|---|--|--|---------------------------|
| <b>QUARTERS/YEAR</b>                        | 4<br>(includes summers)  | 3<br>(Fall-Spring)   | 4<br>(includes summers)   |
| <b>CLASSES/WEEK</b>                         | 3  | 4  | 3                         |
| <b>CLASSES/WEEK ON CAMPUS</b>               | 0  | 4  | 1                         |
| <b>CLASSES/WEEK ONLINE</b>                  | 3  | 0  | 2                         |
| <b>CLASS HOURS</b>                          | At your convenience  | Daytime, between<br>9AM and 4PM  | One evening/week<br>6-9PM |
| <b>QUARTERLY TUITION AND FEES (2015-16)</b> | \$5,577  | \$7,436  | \$5,577                   |
| <b>ANNUAL TUITION (2015-16)</b>             | \$22,308   | \$22,308   | \$22,308                  |
| <b>LOCATION</b>                             | Online with asynchronous professor discussions. Some professors may schedule live video conferences. | Foothill College (Business Psychology)<br>De Anza College or College of San Mateo (Psychology and Social Action) | De Anza College           |



# BACHELOR OF SCIENCE IN BUSINESS PSYCHOLOGY

This degree prepares students for business careers in any role where knowledge of human behavior, motivation and group processes are a plus. The curriculum balances study of strategic business practices with foundations in psychology.

This program enhances your ability to apply the science of human behavior to practical business problems. You learn how theories of psychology apply to business challenges, such as employee motivation, sales, marketing, customer satisfaction, and human resources. You also learn to analyze business problems and develop effective solutions.

## ***Business Courses***

- ▶ Business Communication
- ▶ Business Ethics
- ▶ Business Writing Fundamentals
- ▶ Career Planning and Development
- ▶ Consumer Behavior and Analysis
- ▶ Corporate Accounting and Finance
- ▶ Employee Motivation and Satisfaction
- ▶ Fundamentals of Accounting and Finance
- ▶ Fundamentals of Management
- ▶ Global Economics
- ▶ Human Resource Management
- ▶ Information Technology Management
- ▶ Introduction to Marketing
- ▶ Organizational Behavior
- ▶ Strategic Management and Negotiations

## ***Psychology Courses***

- ▶ Developmental Psychology
- ▶ History of Psychology
- ▶ Human Behavior and Interpersonal Effectiveness
- ▶ Multicultural Studies
- ▶ Psychology of Leadership and Team Development
- ▶ Research Methods and Data Analysis
- ▶ Social Psychology
- ▶ Theories of Personality and Assessment

## ***Capstone Course***

In their senior year, all students complete a Senior Capstone course. This course is an opportunity to apply knowledge from classes to a current business issue.

CE IN  
GY



# BACHELOR OF SCIENCE PSYCHOLOGY AND SOC

This degree emphasizes the application of psychological principles to social issues and social action. It opens the gateway to many career options in social service and community organizing as well as graduate studies for counseling careers.

Courses are designed to deepen your understanding of human behavior and social issues. You will explore individual behaviors in social, cultural, ethnic, political, and economic contexts.

## ***Psychology Courses***

- ▶ Psychological Writing and Communication Skills
- ▶ Biological Psychology
- ▶ Theories of Personality
- ▶ Social Psychology
- ▶ Psychology of Learning and Memory
- ▶ Psychology of Gender
- ▶ Psychology of Lifespan Development
- ▶ Clinical and Abnormal Psychology
- ▶ Cross Cultural Psychology
- ▶ Theories of Counseling
- ▶ Statistics and Methods for the Social Sciences
- ▶ Research Design and Methods

## ***Social Action Courses***

- ▶ Sociology: Social Problems
- ▶ Cultural Anthropology
- ▶ Philosophy of Ethics
- ▶ Philosophy of Science
- ▶ Sociology: Globalization
- ▶ Ethics Identity and Social Stratification
- ▶ Fundamentals of Social Action
- ▶ International Political Economy

## ***Senior Capstone Course***

- ▶ The capstone course provides an opportunity to apply knowledge gained through course work to a current psychological or social issue.

# IN IAL ACTION

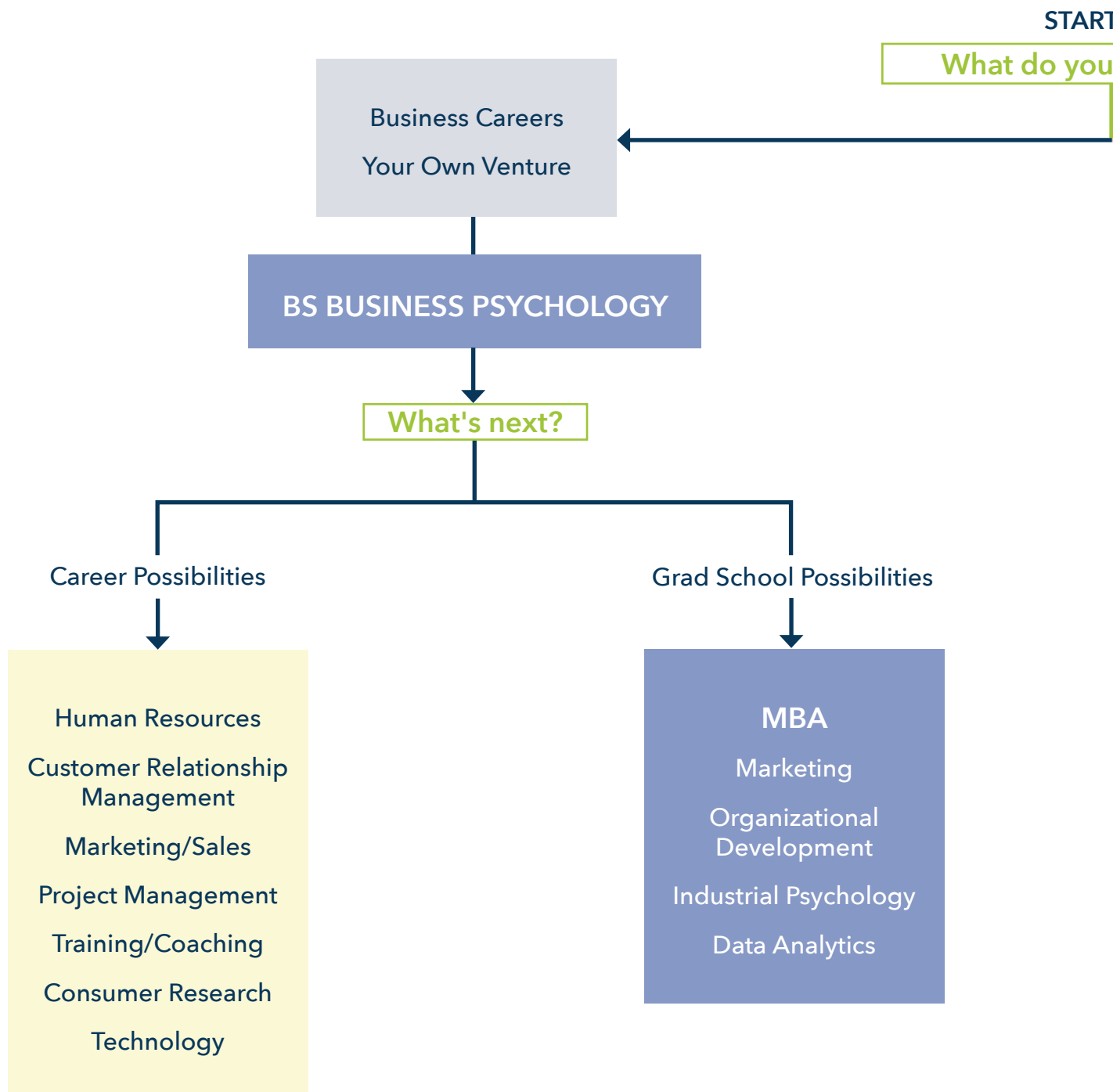
## SENIOR INTERNSHIP

Seniors in the Psychology and Social Action program complete a nine-month internship in a social service setting or serve as PAU research assistants. If you are already employed in social service agency, you may be able to do your internship at your place of employment with the approval of your faculty advisor.

### *Examples of Internship Agencies*

- ▶ Alameda Police Department
- ▶ Bill Wilson Center
- ▶ Boys & Girls Club of the Peninsula
- ▶ Catholic Charities USA
- ▶ Children’s Health Council
- ▶ County of Santa Cruz Health Services Agency
- ▶ Family Matters In-Home Care, LLC
- ▶ Kaiser Permanente
- ▶ Salvation Army
- ▶ Santa Clara County Social Services
- ▶ Service League of San Mateo County
- ▶ Silicon Valley Animal Shelter
- ▶ Social Media Marketing University
- ▶ Stanford University School of Medicine—  
Research Assistance
- ▶ Target Specialty Products
- ▶ Trumpet Behavioral Health
- ▶ Ujima Adult and Family Services, Inc.

# WHERE CAN A PAU DEGREE TAKE YOU?



HERE  
want to do?

Community Service  
Therapy  
Counseling  
Advocacy

**BS PSYCHOLOGY AND  
SOCIAL ACTION**

What's next?

Career Possibilities

Human Services  
Health Care  
Mental Health Care  
Community Agencies  
Education

Grad School Possibilities

*Early Start MA  
Counseling option  
for PAU juniors*

**MA COUNSELING  
(PAU)**

**PAU MS PSYCHOLOGY  
(PhD Prep)**

**PhD in  
CLINICAL  
PSYCHOLOGY  
(PAU)**

**PsyD  
(PAU)**

Licensure

Marriage and  
Family  
Therapist  
(MFT)

Dual MFT/  
LPCC

Professional  
Clinical  
Counselor  
(LPCC)

Licensed Clinical  
Psychologist  
Teaching  
Research

Licensed Clinical  
Psychologist

# STUDENT LIFE

All undergraduate students have many opportunities to participate in the larger PAU community. Whether you're enrolled in an on-campus or online program, you are encouraged to get involved. Actively participating in student life enhances learning, creates friendships and builds your professional network.

## THE BEAUTY OF COHORTS

At the heart of PAU student life is your cohort. Students journey through your program with a small group of students who take all their classes together in a specific sequence. Faculty and cohort members get to know each other well and typically form a strong network that is conducive to collaborative learning.

## STUDENT GOVERNMENT

The undergraduate student body is represented by a Student Council. Leadership opportunities are open to all students while attending classes at PAU.

## ACADEMIC SUPPORT

PAU provides students with resources to excel academically:

- ▶ Annual orientations get you off to a good start.
- ▶ Robust learning management system with video conference capability for building connections among instructors and cohort members.
- ▶ Faculty advisors and PAU graduate student teaching assistants help you succeed and provide support when you need it.
- ▶ PAU staff assist with class registration, financial aid, library resources, veterans benefits, and many other administrative services.

## CAREER TALKS AND PROFESSIONAL SPEAKER SERIES

Experts in psychology and business disciplines regularly present talks on topics like international consulting, resume writing and job search tips, careers in forensic psychology, susceptibility to hypnosis, positive psychology, the psychology of terrorists and terrorism, and the adolescent brain. Lectures are recorded and available for viewing online.

- ▶ Diaspora–PAU Organization for Black Mental Health
- ▶ Forensic Mental Health Student Group
- ▶ Healing, Spirituality, and Social Action Group
- ▶ Latino Student Organization
- ▶ Meditation and Mindfulness Group
- ▶ Men’s Wellness Group
- ▶ Pacific Research Society
- ▶ PAU Running Group
- ▶ Psychological Association for Gender Expression and Sexuality
- ▶ Psychology and the Arts Student Forum
- ▶ Psychology Honor Society
- ▶ Social Action Collective Volunteer Group
- ▶ Student Parent Association
- ▶ Student Veteran Organization
- ▶ Students for Ethnic and Cultural Awareness
- ▶ Students for Global Mental Health
- ▶ Union of International Students
- ▶ Wellness Initiative for Therapists in Training
- ▶ Women’s Health Alliance

## SOCIAL ACTIVITIES

PAU sponsors large scale events and intimate gatherings, including a research forum, an annual gala, lunch-and-learn networking sessions with industry professionals, and more. These are opportunities for you to meet faculty and students outside of your program.

## PAU STUDENT ORGANIZATIONS

- ▶ Animal Assisted Therapy Club
- ▶ Asian Pacific American Psychological Student Association
- ▶ Association of Child and Family Emphasis
- ▶ Association of Neuropsychology Students in Training
- ▶ Association of Trauma Studies
- ▶ Behavioral Intervention Technologies
- ▶ Business Psychology Networking Club
- ▶ Coalition for Disability Advocacy and Education





## THINK A PRIVATE UNIVERSITY IS NOT AFFORDABLE?

Many students and their families assume that attending PAU will be more expensive than attending a state school.

## THINK AGAIN!

On the surface, public universities look cheaper. But when it typically takes three years to complete upper division course work, you're paying an extra year of expenses while losing out on career pay.

At PAU, you are guaranteed to be able to graduate in two years—or less. This means huge savings on the overall cost of your degree.

### You start earning sooner.



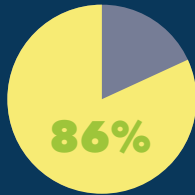
The sooner you graduate, the sooner your PAU degree starts working for you.

### Your tuition *never* goes up.



Once you enroll, your tuition is set. (State schools can raise your tuition any time!)

### Scholarships and grants bring your cost down.



86% of students receive grant or scholarship aid.

### You can *keep your job* while you earn your degree.



Online options enable many students to continue working while earning their degree.

### Class enrollment is *guaranteed*.



You're never shut out of a class, and we even take care of registration for you.

### You graduate in *two years—or less*.



All programs are structured to guarantee the ability to graduate on time.

# TRANSFER MADE EASY

## STEP 1: TALK TO US.

- ▶ Speak with a PAU admissions counselor.
- ▶ Get details about PAU programs and transfer requirements.
- ▶ Discuss your education plan.
- ▶ Complete the PAU application.
- ▶ Applications accepted through mid September.

## STEP 2: DEVELOP YOUR EDUCATION PLAN.

- ▶ Make sure that your community college coursework fulfills PAU admission requirements.
- ▶ Your PAU admissions counselor can help you with this.
- ▶ PAU transfer requirements are the same as California State University as long as one Social Sciences course is General Psychology.

## STEP 3: COMPLETE ALL COURSES IN YOUR EDUCATION PLAN.

- ▶ Finish by the end of summer quarter.
- ▶ Arrange for your transcripts to be sent to PAU.

## STEP 4: SEAMLESSLY TRANSITION TO PAU.

- ▶ All undergraduate programs begin in Fall quarter.
- ▶ Classes start in late September.

## TRANSFER REQUIREMENTS

Same as California State University General Education/Breadth (CSU GE Breadth) Requirements.

### ***Area A: English Language Communication and Critical Thinking***

- ▶ Minimum of 9 semester units (12 quarter units)

### ***Area B: Scientific Inquiry and Quantitative Reasoning***

- ▶ Minimum of 9 semester units (12 quarter units)

Includes one course from each: Mathematics/Quantitative Reasoning, Physical Science, and Life Science

### ***Area C: Arts and Humanities***

- ▶ Minimum of 9 semester units (12 quarter units)
- ▶ Select at least one course in each: Arts and Humanities

### ***Area D: Social Sciences***

- ▶ Minimum of 9 semester units (12 quarter units)
- ▶ With courses in at least two disciplines, including General Psychology

### ***Area E: Lifelong Learning and Self-Development***

- ▶ Minimum of 3 units (4-5 quarter units)
- ▶ Palo Alto University will accept a maximum of 6 courses in Physical Education for transfer.
- ▶ Most occupational/vocational coursework is not eligible for transfer.

**Total Credit Hours:**  
**60 semester or 90 quarter unit hours**



## PAU ADVANTAGES

**15-30**  
students per class

**87%**  
receive  
financial aid

**92%**  
graduate in 2  
years or less

**80%**  
graduation rate  
(2010-present)

**55%**  
receive Pell Grants  
averaging \$4,377

## 0 TUITION INCREASES

once you're  
enrolled

**86%**  
receive grant or  
scholarship aid

**41%**  
ethnic  
minority

**74%**  
receive federal  
student loans  
averaging  
\$10,598

## BEYOND A BACHELOR'S DEGREE: GRADUATE PROGRAMS AT PAU

For students who plan to continue their education at the master's or doctoral level, Palo Alto University offers several unique opportunities.

### **Early Start MA Counseling Option**

Juniors in PAU bachelor degree programs may apply for early admission and early participation in PAU's MA Counseling program. This master's degree prepares students to pursue licensure as a Marriage and Family Therapist (MFT) or as a Licensed Professional Clinical Counselor (LPCC).

Like the undergraduate programs, the MA Counseling program follows the cohort model and offers online or hybrid format options. To learn more, please speak to a PAU admissions counselor.

### **MA Counseling (MFT/LPCC)**

The MA Counseling (MFT/LPCC) degree prepares students to see clients as a licensed counselor or therapist. There are two areas of emphasis:

- ▶ The Marriage, Family, and Child emphasis fulfills all requirements for MFT licensure in the State of California.
- ▶ The Clinical Mental Health emphasis fulfills all requirements for LPCC licensure in California and many other U.S. states and countries.
- ▶ Graduates can also pursue dual MFT/LPCC licensure with this degree.

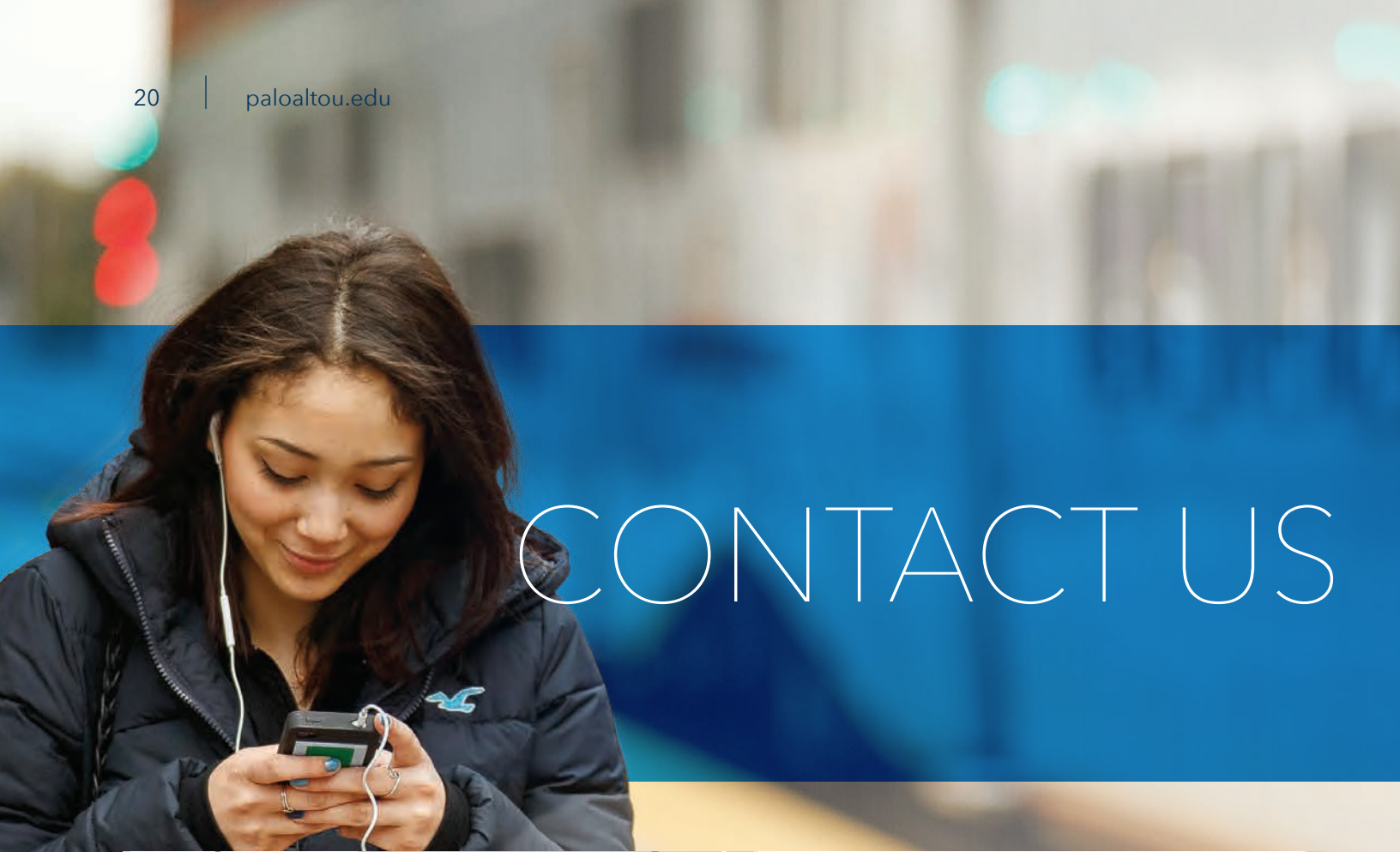
### **MS Psychology (PhD Prep)**

The MS Psychology (PhD Prep) program prepares students for admission to Palo Alto University's PhD in Clinical Psychology program. Students may also opt to receive a Master's in Psychology degree, which supports career advancement in many fields.

### **PsyD**

The PsyD is a professional degree that prepares graduates to practice as licensed clinical psychologists. Palo Alto University offers a PsyD degree through a unique consortium with Stanford University School of Medicine Department of Psychiatry and Behavioral Sciences. Faculty are drawn from PAU and Stanford, and the program emphasizes psychological interventions, assessment, ethics, cultural diversity, psychopathology and research.





# CONTACT US



undergrad@paloalto.edu | 650-417-2050

## SCHEDULE A MEETING

PAU has offices at three Silicon Valley community colleges.  
An admissions counselor will be happy to meet at your convenience.

### ***De Anza College***

Cupertino, CA  
Student and Community  
Services Building, Room 242

(408) 864-8474

### ***Foothill College***

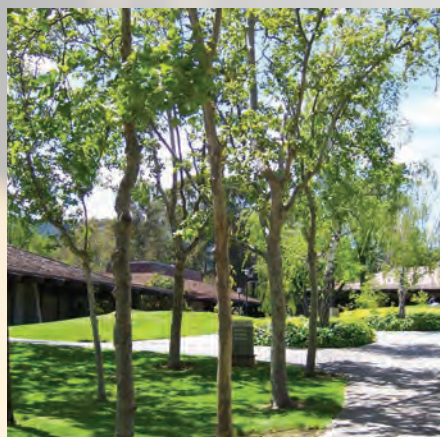
Los Altos, CA  
Building 8300

(650) 417-2052

### ***College of San Mateo***

Redwood City, CA  
Building 10; Room 483

(650) 433-3876







Palo Alto University  
1791 Arastradero Road  
Palo Alto, CA 94304  
[www.paloaltou.edu](http://www.paloaltou.edu)